

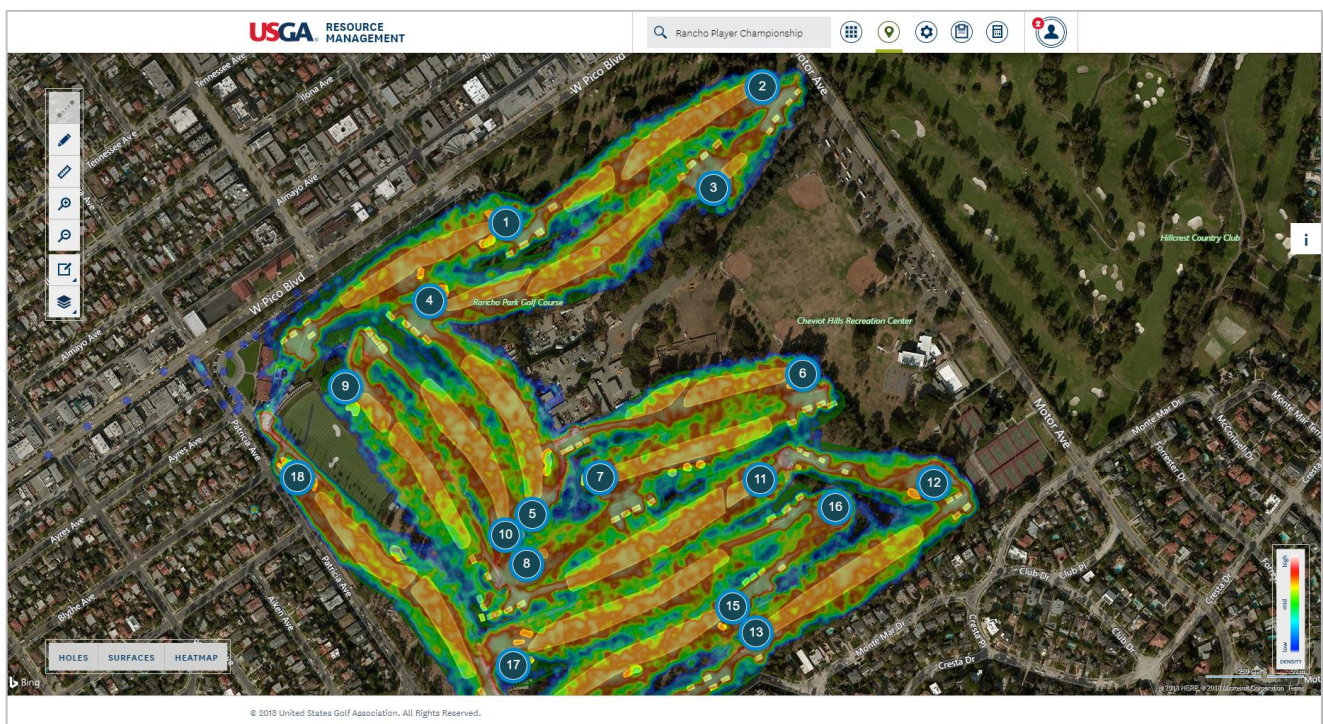


GPS DATA COLLECTION

Rutgers University Golf Course is working with the USGA to study golfers' traffic patterns at the course. If you are playing May 31 to June 2, you may be asked to participate by carrying a small GPS device during your round.



We will be handing out small GPS units on the first tee. Please carry it in your pocket or clip it to your clothing as you play. Please do not leave the GPS device in your bag or in your cart. At the conclusion of your round, please return the GPS device to a staff member who will be by the 18th green or in the shop.



The tags record your movements and do not transmit your position in real time. Your participation will help us identify the areas that receive the most –and the least – golfer traffic. This information will assist in improving the course design and maintenance. In addition, the data can provide insights about pace of play at Rutgers.

Thank you for your help. Your participation in this study will benefit the entire Rutgers Golf community. We hope you have a great round.